

Fast *in vitro* screening of ototoxicity and new drug efficacy targeting hearing disorders

Day 1



Organ of Corti cell culture

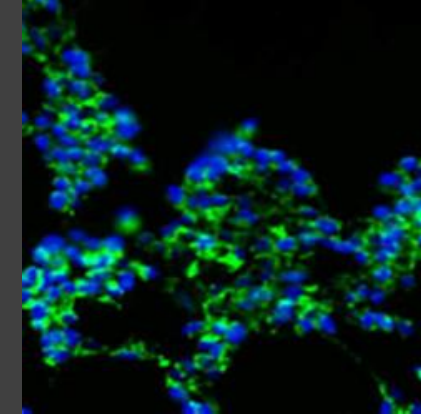
Day 3



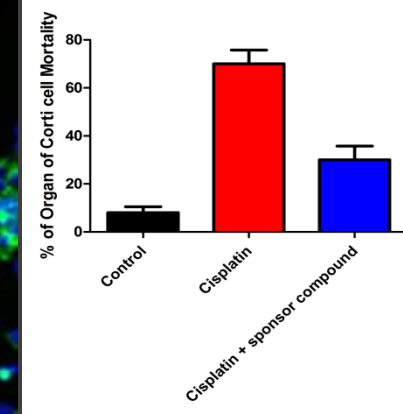
Option 1 : Sponsor compound treatment for ototoxicity studies

Option 2 : Sponsor compound treatment for efficacy study in cisplatin or gentamicin treated cells

Day 6



Inner ear cell mortality and survival quantification



mouse Organ of Corti cell line is widely used to *in vitro* study the ototoxic effect of new pharmacological candidates in cochlear hair cells and to rapidly screening the efficacy of new drugs targeting hearing disorders induced by ototoxicity.

In vivex automatized this *in vitro* procedure allowing to select the best sponsor drug candidate targeting cisplatin or gentamicin ototoxicity, increasing the preclinical *in vivo* study success .